



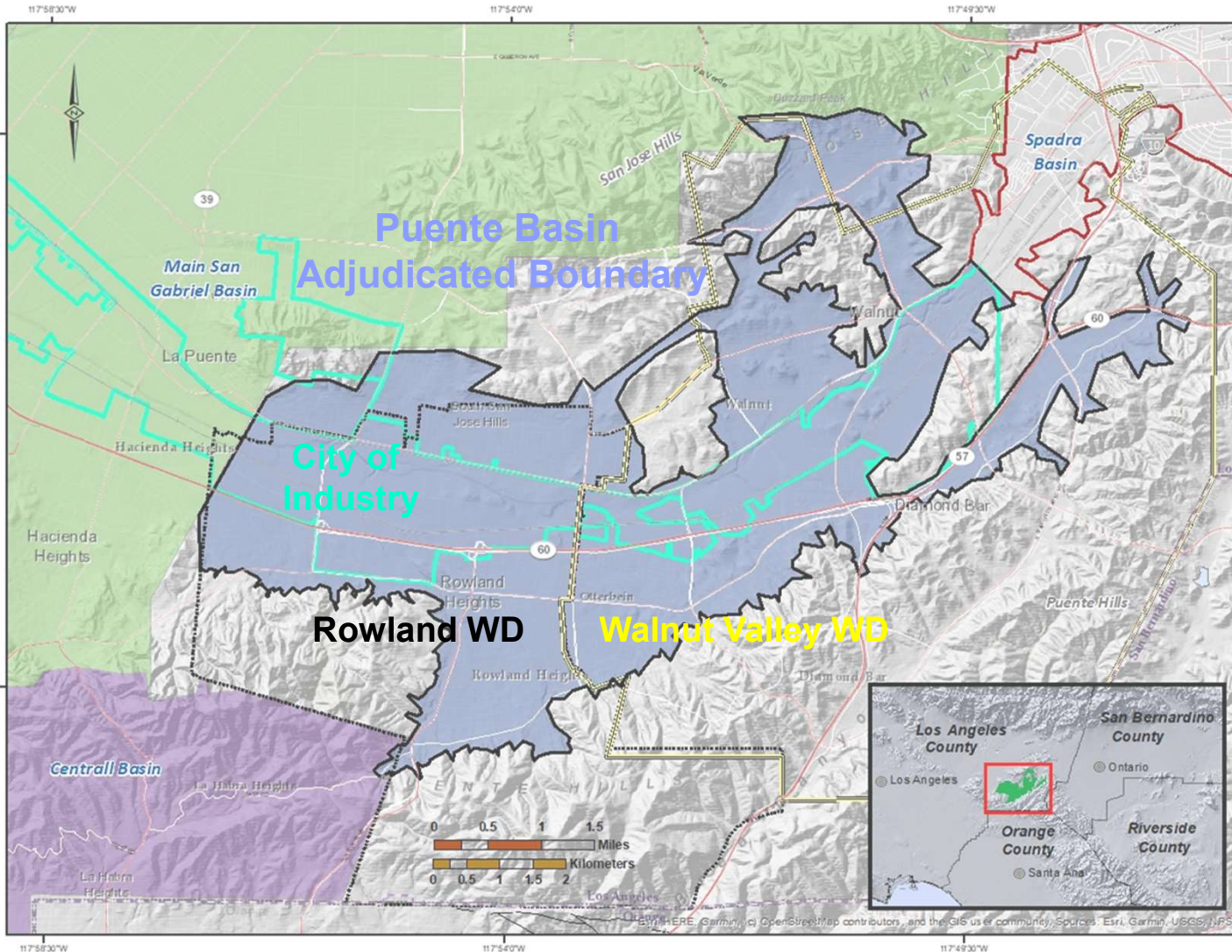
Development of a Puente Basin Groundwater Management Plan: Phase 1 Stakeholder Meeting

January 11, 2023



Agenda

- Stakeholder Introductions
- Website
- Development of Groundwater Management Plan - Phase 1
- PBWA and Stakeholder Issues, Needs and Wants
- Next Steps



Stakeholders:

- Walnut Valley WD
- Rowland WD
- City of Industry
- Successor Agency to Industry Urban Development Agency
- Royal Vista Golf Course
- Puente Basin Watermaster
- City of Walnut
- City of Diamond Bar
- Spadra Basin GSA
- Main San Gabriel Basin Watermaster
- Six Basins Watermaster
- Upper San Gabriel Valley Municipal WD
- Metropolitan WD of Southern California
- Three Valley Municipal WD
- LA County Sanitation Districts
- LA County Department of Public Works
- LA RWQCB
- EPA for Puente Valley Operable Unit



Website - <https://puentebasin.com/>

HOME ABOUT US GOVERNANCE PROJECTS PARTNERS MEDIA CONTACT

GMP Development

About

Puente Basin

Public Meetings

Agenda

Packet

Presentation

Minutes

Documents

TM 1 Draft

TM 1 Final

TM 2 Draft

TM 2 Final

Etc....

Draft GMP Plan

Final GMP Plan

Resources

WELCOME TO PUENTE BASIN WATER AGENCY



A Joint Powers Authority between Rowland Water District & Walnut Valley Water District created in 1971 for the protection and stewardship of the local, imported and recycled water supply within Puente Basin.

OUR FOCUS: Achieving a sustainable and innovative planning and regional

LEARN MORE

DOWNLOAD OUR BROCHURE



SUSTAINABLE



RELIABLE

REGIONAL



Development of Groundwater Management Plan (GMP)

Phase 1: *Describe Conceptual Understanding of the Puente Basin and Establish GMP Goals*

Objectives:

- Establishing the stakeholder group and the stakeholder process.
- Develop a detailed description of the physical state of the basin and water-management setting, for both historical and current conditions.
- Preparing a description of the goals for improved management of the Puente Basin.

→ Phase 2: Evaluate Alternatives for Basin Management

→ Phase 3: Prepare GWMP and Implementation Plan

Development of GMP - Phase 1

Task 1 - Establish Stakeholder Group and Process to Obtain Input

Objective: Convene a Puente Basin Stakeholder Group of all interested stakeholders to support the PBWA in the development of the GMP.

Stakeholder Group:

- Provide the PBWA a venue to engage, educate and inform interested stakeholders during GMP development
- Solicit input on Stakeholder Group issues, needs, and wants.
- Understand the ability/authority of the stakeholders participate in GMP implementation.
- Provide a mechanism to receive input on draft deliverables.

Development of GMP - Phase 1

Task 2 – Describe Conceptual Understanding of the Puente Basin

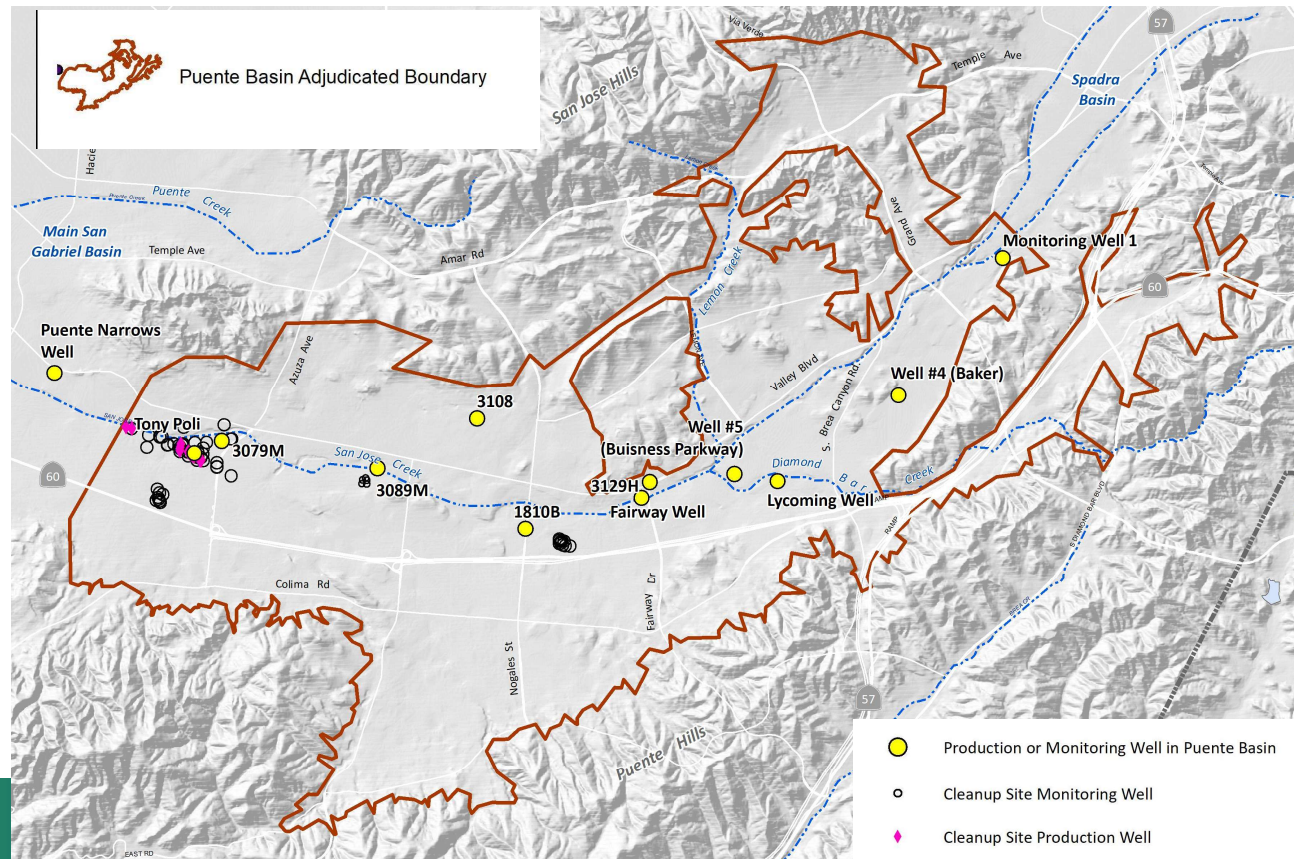
Objective: Consensus amongst the PBWA & stakeholders on historical and current physical conditions and water management setting.

- 2.1 - Prepare hydrologic database and library of reports
- 2.2 - Describe GMP Area and Basin Setting
- 2.3 - Prepare Technical Memorandum 1 (TM 1) Conceptual Understanding of the Puente Basin

Development of GMP - Phase 1

Task 2.1 – Prepare hydrologic database and library of reports

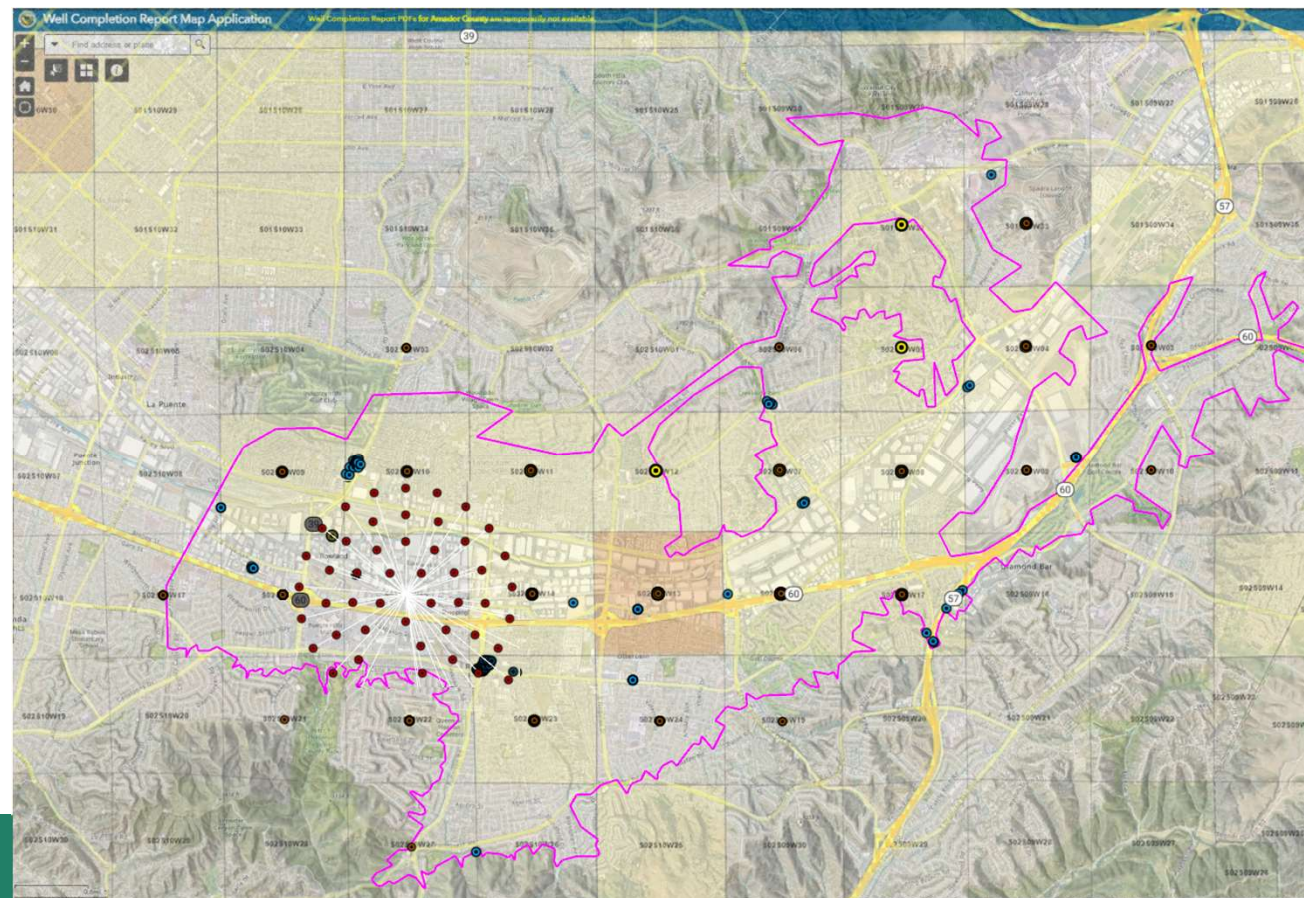
- Groundwater data collection, in progress:
 - Well location (PBWA, GeoTracker)
 - Pumping
 - Water Level
 - Water Quality
- Surface water, precipitation
- GIS layers



Development of GMP - Phase 1

Task 2.1 – Prepare hydrologic database and library of reports

- Well logs data collection.
 - PBWA/Well Owners
 - DWR Well Completion Report Database (900+ logs)
- Library of reports.
 - Watermaster Annual Report
 - All hydrogeologic studies
 - Other



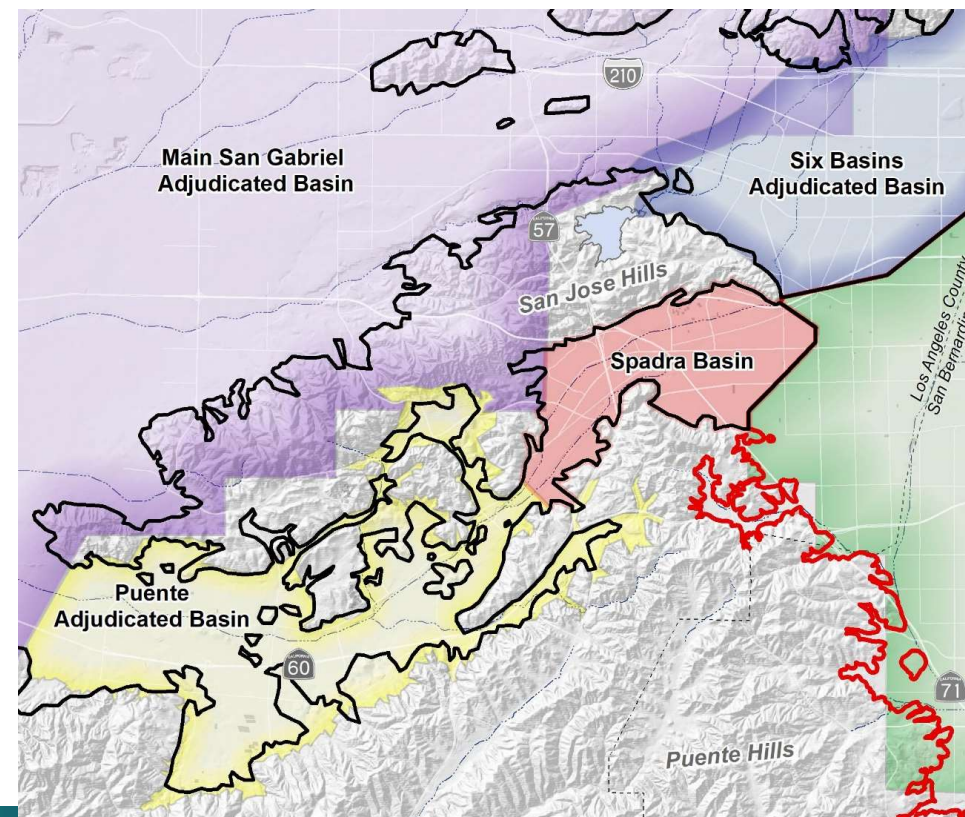
WEST YOST

Development of GMP - Phase 1

Task 2.2 – Describe GMP Area and Basin Setting

“GMP Area” description:

- Jurisdictional areas and other features.
- Existing monitoring and groundwater management programs
- Historical and current land use, water use, conveyance and disposal.
- Water demands and water-supply plans.

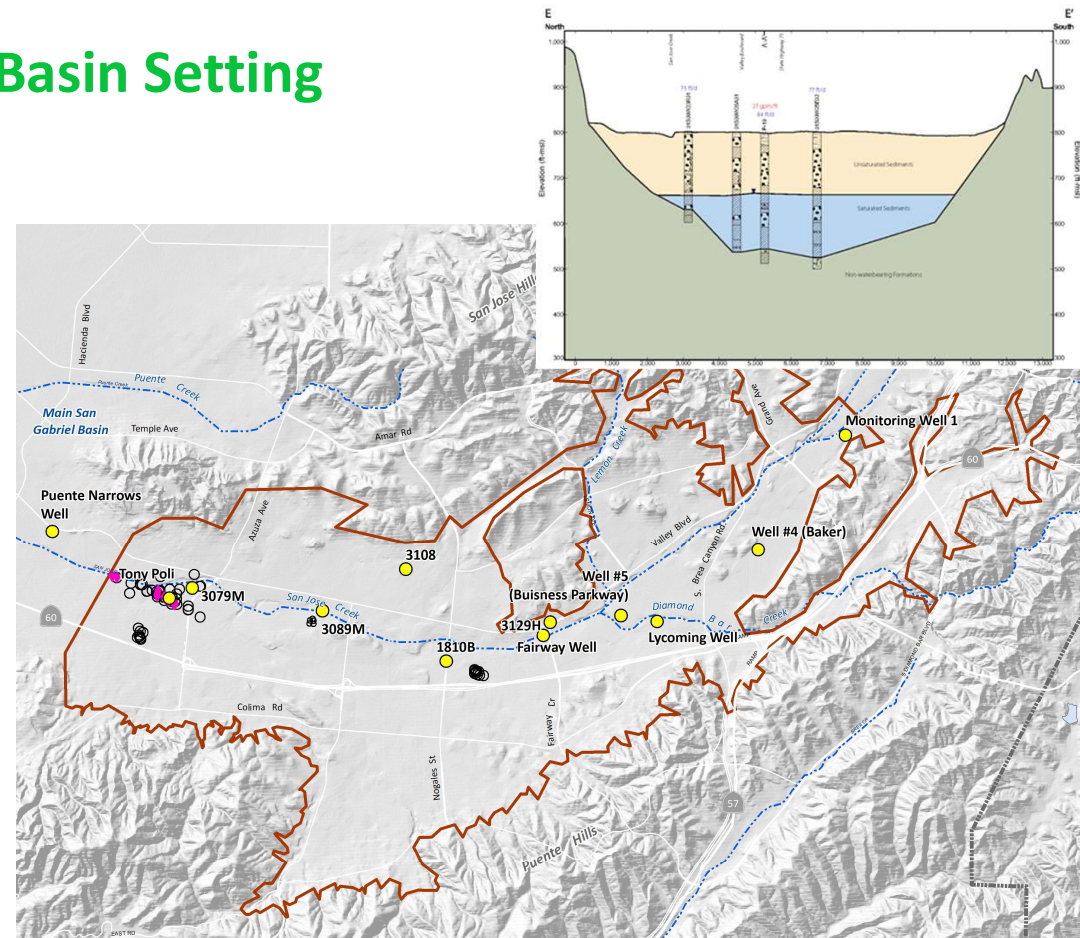


Development of GMP - Phase 1

Task 2.2 – Describe GMP Area and Basin Setting

“Basin Setting” description:

- Hydrogeologic conceptual model (*surface geology, aquifer geometry and properties, etc.*)
- Current and historical groundwater conditions (*production, GW flow, WQ, WLS, land subsidence, etc.*)
- Current and historical water budget
- Identification of data gaps



Development of GMP - Phase 1

Task 2.3 – Prepare TM 1 – Conceptual Understanding of the Puente Basin.

Describes the “GMP Area” and “Basin Setting”

Tech Memo 1:

1. Introduction
2. GMP Area
3. Basin Setting and Data Gaps
4. Summary of Basin Management Challenges
5. Appendix A – Comments and Response-to-Comments



Development of GMP - Phase 1

Task 3 – Describe Goals and Concepts for Improved Basin Management

Objective:

- Prepare an “objective statement” for the GMP
- Articulate concepts for improving the management of the Puente Basin.

Issues, Needs, and Wants

Basin Management Challenges

Development of GMP - Phase 1

Task 3 – Describe Goals and Concepts for Improved Basin Management

Tech Memo 2:

1. Introduction
2. GMP Objectives
3. Concepts for Improved Basin Management
4. Scope of Work and Cost Estimate for Phase 2
5. Appendix A – Comments and Response-to-Comments



PBWA and Stakeholder Issues, Needs and Wants

Issue: Concern of the PBWA/Stakeholder

Need: Requirement of the PBWA/Stakeholder

Want: Desire of the PBWA/Stakeholder



Issues

Issue: Concern of the PBWA/Stakeholder

- **Example:** Imported water from the State Water Project is becoming more expensive and less reliable.



Needs

Need: Requirement of the PBWA/Stakeholder

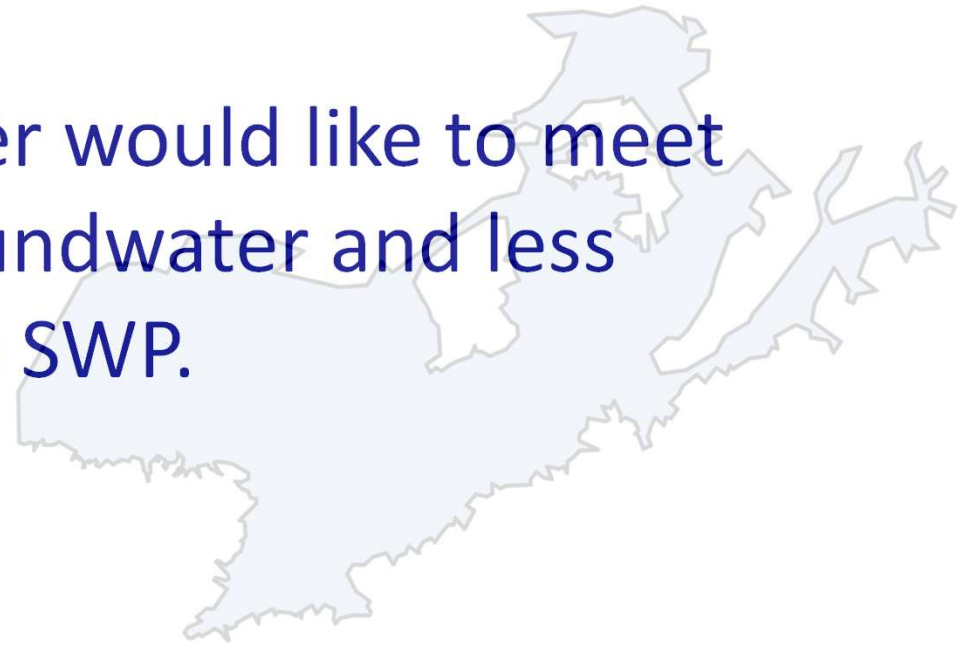
- **Example:** To meet peak demands, Stakeholder always needs the ability to pump at least 500 gpm from its wells in the Puente Basin.



Wants

Want: Desire of the PBWA/Stakeholder

- **Example:** The Stakeholder would like to meet demands with more groundwater and less imported water from the SWP.



Assignment

- Articulate your agency's *issues, needs, and wants*
- Deliver to West Yost and PBWA by February 14, 2023
 - Email, letter, Excel list, etc. Send to vweamer@westyost.com and jmacias@wvwd.com
- West Yost will compile responses, provide attribution, identify commonalities. Documentation will be posted on Puente Basin GWP webpage and discussed at the next meeting.

Next Steps

- **January 2023**
 - Complete data collection
 - Set up GMP webpage
 - Follow-up on issues, needs, and want assignment.
- **Through February 14, 2023** – Articulate/submit *issues, needs, and wants*
- **February - March 2023** - Compile and document *issues, needs, and wants*
- **February - June 2023** – Describe the Plan Area, Basin Setting, and prepare draft *TM 1 Conceptual Understanding of the Puente Basin*
- **July/August 2023** – Set meeting to review *TM 1* and *issues, needs, and wants*

THANK YOU



WESTYOST.COM